

W&H PEACOCK  
AUCTIONEERS & VALUERS

# Mid Century Design

Bedford Auction Centre  
Friday 19th August | Commencing at 10.30am

Viewing: Friday 12th August 9am - 8pm  
Saturday 13th August 9am - 5pm  
Thursday 18th August 9am - 5pm  
and Morning of Sale from 9am  
[www.peacockauction.co.uk](http://www.peacockauction.co.uk)

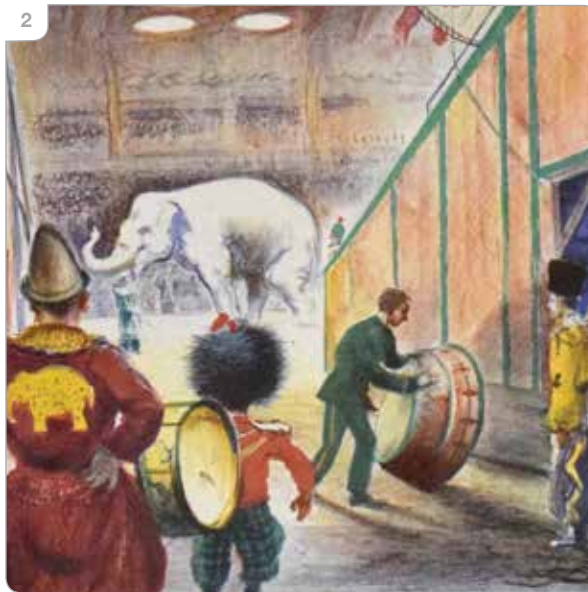
- 1 Tommy Fitchet (Scottish),  
A pressed leaf and  
abstract shapes,  
signed and dated '07,  
mixed media on glass,  
image 20 x 20 cm,  
together with two others  
in the same series (3)

**Est £250 - £350**

- 2 Russell Sidney Reeve  
(1895-1970),  
'The Elephant Act  
S.P.17',  
colour lithograph,  
printed by Baynard Press  
for School Prints Ltd.,  
image 50 x 76 cm

**Est £200 - £300**

2



3

- Clarke Hutton  
(1898-1984),  
'Harlequinade' S.P.13,  
colour lithograph,  
printed by Baynard Press  
for School Prints Ltd.,  
image 50 x 76 cm

**Est £100 - £200**

1





4 Zheni Warner (Bulgarian, b. 1954), 'Lady Julian- Revelations of Divine Love', signed and dated 1998 verso, image 30 x 30 cm, together with two others in the same series (3)

**Est £500 - £800**

5 Todd White (American, b. 1969), 'Salt and Pepper', signed in ink and numbered 283/350, serio-lithograph, with c.o.a., image 54 x 40 cm

**Est £200 - £300**



6 Todd White (American, b. 1969), 'Rounds on Me', signed in ink and numbered 283/350, serio-lithograph, with c.o.a., image 24 x 53 cm

**Est £150 - £200**

7

Hans Olsen for Frem  
Røjle, a 1960's Danish  
teak 'Roundette' dining  
set, the extending table  
with four triangular-form  
nesting and stacking  
chairs upholstered in  
black vinyl \*SFP

**Est £800 - £1,200**

8

Ole Winther for  
Holmegaard, a blue glass  
decanted with a Viking  
head seal, h. 23 cm

**Est £30 - £50**

9

Simon Gates for  
Orrefors, a 'Thousand  
Windows' clear glass  
vase, signed and  
numbered 39571,  
d. 12 cm

**Est £30 - £40**



- 10 In the manner of Gunnar Nyman, a 'Serpentini' type glass vase, h. 22 cm

**Est £30 - £50**

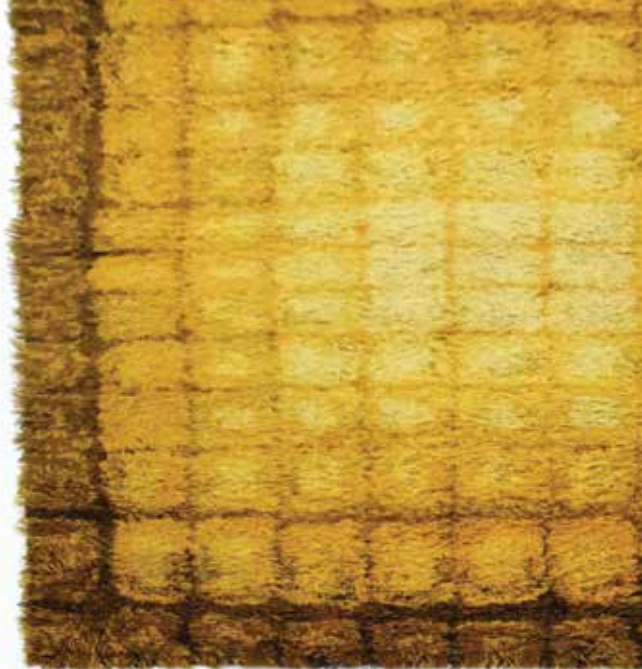
- 11 A Danish rosewood, crossbanded and tile topped occasional table by Trioh, the rectangular surface resting on four legs with exposed joints, stamped, 130 x 65 cm

**Est £100 - £150**



- 12 Attributed to Knut Hesterberg for Ronald Schmitt, a Model K9 'propeller' coffee table, the glass surface resting on an aluminium sculptural base, d. 98 cm

**Est £300 - £500**



- 13 A pair of 1970's Danish woolen carpets in shades of yellow, 295 x 200 cm each

**Est £200 - £300**

15



14

Two 1950's ceiling lights, each with three spots beneath a coloured glass shade (2)

**Est £80 - £120**

15

Two 1920's Ruskin pottery lustre vases including a lilac example, h. 19 cm, and an orange example numbered 1923, h. 25 cm (2)

**Est £300 - £400**

16

A Murano Sommerso multi-faceted ruby, amber and clear glass vase, h. 29 cm

**Est £100 - £150**

16



17

A Murano Sommerso pestle and mortar in ruby, amber and clear glass, paper label to the side

**Est £30 - £40**





- 18** Vicke Lindstrand for Kosta, a grey glass vase of drinking glass form, inscribed and numbered 1282, h. 26 cm

**Est £40 - £60**

- 19** After Pablo Picasso (1881-1973), 'Arlequin et Cheval', 1995 coloured reproduction, image 11 x 15 cm

**Est £30 - £50**



- 20** A Danish oak and upholstered sofa by 'Hjorring Sofa System', the back lifting up to provide more room \*SFP

**Est £200 - £300**

21



21

A 1960's Danish black leather three-seater sofa on teak tapering legs  
\*SFP

**Est £300 - £400**

22

A 1960's teak two-door cabinet with a beech interior and shaped handles, on later tapering legs, w. 134 cm

**Est £100 - £150**

23

A 1960/70's Danish teak sideboard with a bank of four drawers flanked by two pairs of tile-inserted doors, on a pair of slab supports joined by a cross stretcher, l. 215 cm

**Est £150 - £200**

24

A pair of Danish teak open bookcases, on later circular legs, w. 134 cm each

**Est £100 - £150**





- 25** Aage Christiansen for Eran, a 1960's Danish brown leather 'Matador' armchair on teak legs  
\*SFP

**Est £150 - £200**

- 26** A Danish teak bookcase with a fall-front cabinet to the side, on later circular legs, l. 134 cm

**Est £60 - £100**

- 27** A Danish teak bookcase with a pair of glazed sliding doors, on later circular legs, l. 134 cm

**Est £60 - £100**



- 28** A 1960's Danish teak chest of three drawers with shaped handles, on later bulbous legs, w. 84 cm

**Est £50 - £80**

- 29 A pair of 1960/70's and later teak bedside tables, each with a glazed surface and single drawer, w. 37 cm each

**Est £50 - £80**

- 30 Ronnie Vaughan for HK Furniture (Howard Keith), a 1980's burr oak 'Ambassador' desk on slab supports, with two frieze drawers, label to the interior, 189 x 95 cm

**Est £300 - £500**



- 31 A black enamelled pendant light with brass fittings

**Est £30 - £40**

- 32 A 1970's red enamelled and aluminium highlighted ceiling light

**Est £30 - £50**

30





- 33** A Danish brass pendant ceiling light

**Est £30 - £40**

- 34** A 1970's Danish burgundy enamelled ceiling light

**Est £40 - £60**

- 35** A pair of 1960's Danish teak and brass standard lamps with associated shades

**Est £100 - £150**

- 36** A 1960's Danish teak and copper-finished standard lamp

**Est £50 - £80**

- 37** Two 1960's Danish turned teak standard lamps with associated shades

**Est £80 - £120**

- 38** Charles & Ray Eames for Herman Miller, a 1976 ottoman with a rosewood shell and four-star base, label and date stamp to the underside \*SFP

**Est £300 - £500**



39



39

Jean Claude Mahey  
for Roche Bobois, a  
1970's burl walnut and  
brass bound buffet bar,  
l. 140 cm \*Previously in  
the Dorchester Hotel,  
London

**Est £400 - £600**

40

Attributed to Roche  
Bobois, a 1970's burl  
walnut and brass  
mounted occasional  
table, 70 x 70 cm

**Est £60 - £100**

41

A 1960's Danish teak  
and crossbanded desk,  
the surface 'floating'  
over two pedestals on  
tapering legs joined by  
stretchers, the reverse  
with an open bookcase,  
127 x 68 cm

**Est £200 - £300**

40





42



42

A 1960's Danish teak and crossbanded desk, the surface over two three-drawer pedestals, on circular tapering legs, the reverse with an open bookcase, 130 x 65 cm

**Est £200 - £300**

43



43

A 1960's Danish three-seater sofa by Skippers Mobler upholstered in green and blue fleck, on circular teak legs \*SFP

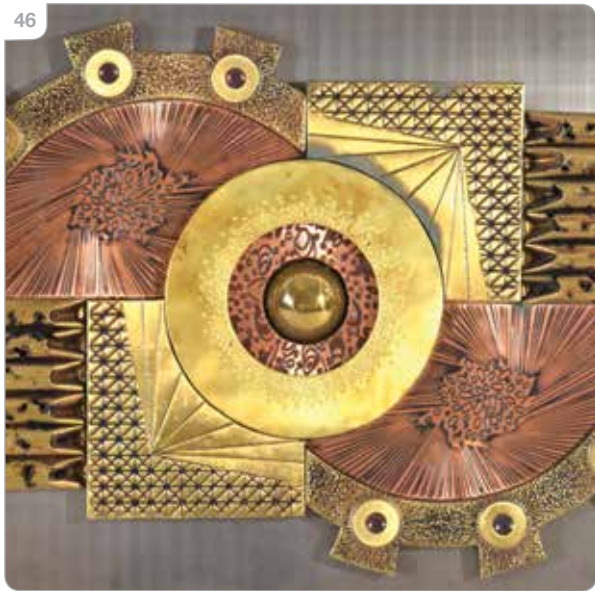
**Est £250 - £300**

44

A 1970's French gilt lacquered floor lamp in the form of a palm tree surmounted by a glass globular shade, h. 157 cm

**Est £150 - £250**

46



- 46 A 1970's wall sculpture by Stephen Chun of Hong Kong, polished aluminium mounted with copper and brass, 91 x 51 cm

**Est £300 - £400**

- 47 A Modernist beech sculpture in the manner of Henry Moore, h. 56 cm

**Est £50 - £80**

- 45 A 1970's French sculptural table lamp in the form of a lily with bronze leaves, h. 87 cm

**Est £200 - £300**

- 48 Russell Watson, a 1977 handcrafted sycamore sculpture on a cuboid base, signed, h. 38 cm

**Est £80 - £120**





51



51

A Timo Sarpaneva  
'Orchid' glass vase,  
signed and numbered  
42568, h. 16 cm

**Est £80 - £120**

49

A Danish brass finished  
ceiling light of trumpet  
form

**Est £40 - £60**

50

A Danish brown  
enamelled and aluminium  
highlighted ceiling light

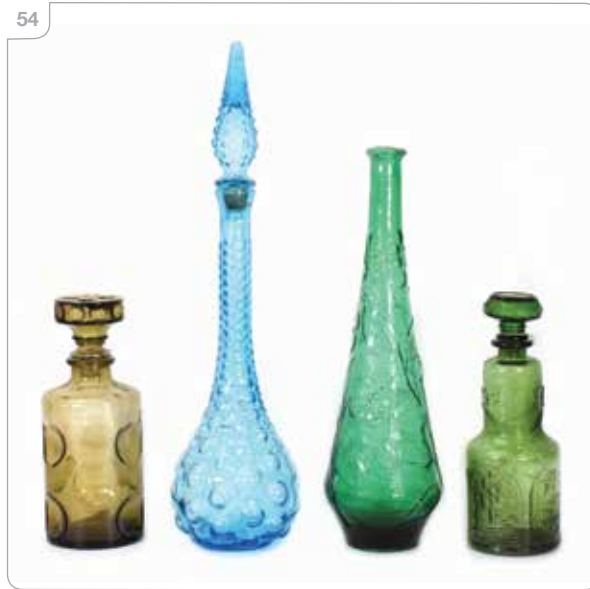
**Est £30 - £40**

52

In the manner of Miroslav  
Klinger, a copper  
coloured glass vase,  
h. 13 cm

**Est £20 - £30**

54



53

Bo Borgstrom for Aseda,  
an amber-coloured  
cased-glass vase, h.  
26 cm, together with a  
green Aseda vase (2)

**Est £30 - £50**

54

A group of four moulded  
glass medicine bottles  
including three Italian  
examples (4)

**Est £30 - £50**

59



55

A Sklo Union low flat-backed brick-type vase, w. 17 cm, together with two tall Sklo vases (3)

**Est £30 - £50**

57

A pair of moulded glass flower-head vases decorated with stylised flowers, d. 14 cm each

**Est £40 - £60**

59

A French aqua blue vase by Vallauris with a 'frost' glaze, signed, h. 15 cm

**Est £40 - £60**

60



61

Kjell Engman for Kosta Boda, a glass charger with blue spiral highlights, inscribed and numbered 79110, d. 33 cm

**Est £60 - £80**

56

Goran Warff for Kosta Boda, a pair of 'Polar' glass tealight holders (2)

**Est £30 - £40**

58

A Holmegaard grey glass bottle vase, h. 30 cm

**Est £20 - £30**

60

A Swedish full-lead glass bowl with a royal blue centre and translucent border, by Mats Jonasson, d. 31 cm

**Est £40 - £60**

62

A Holmegaard smoked brown glass vase of carafe form, signed, h. 31 cm

**Est £30 - £50**





- 63** A German brass and stoneware table lamp by KPM Berlin, the body relief decorated with a classical nude and goat, h. 61 cm incl. fittings

**Est £150 - £200**



- 64** A 1990's Swedish Memphis-style Stoja Series wall light by Ikea in red, blue and white, Model V716, occasionally attributed to Ettore Sottsass

**Est £40 - £60**



- 66** An Italian white marble table lamp, h. 36 cm incl. fittings

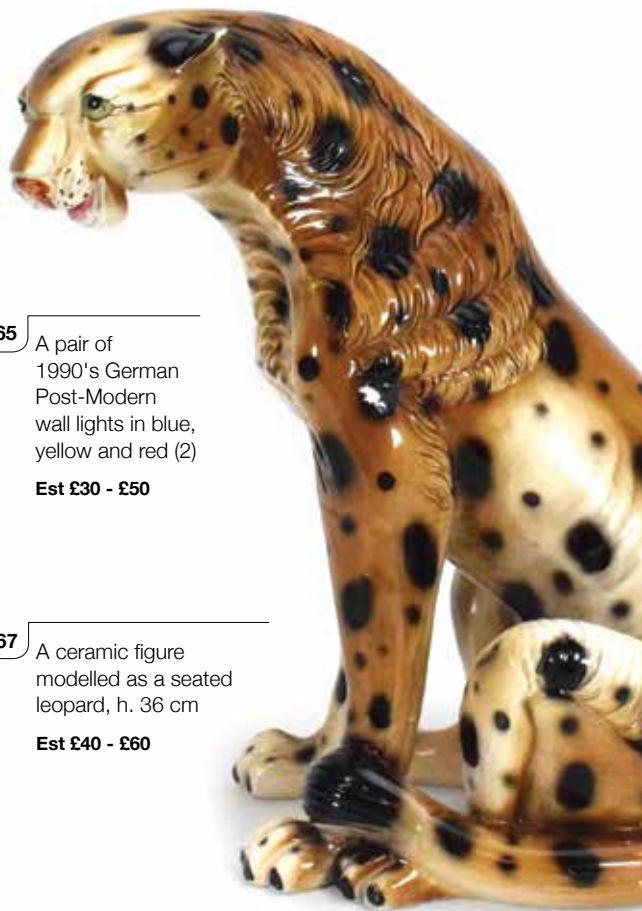
**Est £50 - £80**

- 65** A pair of 1990's German Post-Modern wall lights in blue, yellow and red (2)

**Est £30 - £50**

- 67** A ceramic figure modelled as a seated leopard, h. 36 cm

**Est £40 - £60**



68

Three Swedish rya  
scatter cushions

**Est £30 - £50**



69

A 1980's architects work  
bench supported by  
two red trestles,  
139 x 65 cm, together  
with a similar stool (2)

**Est £60 - £80**

70

A Swedish teak framed  
mirror of circular form,  
d. 61 cm

**Est £60 - £80**

71

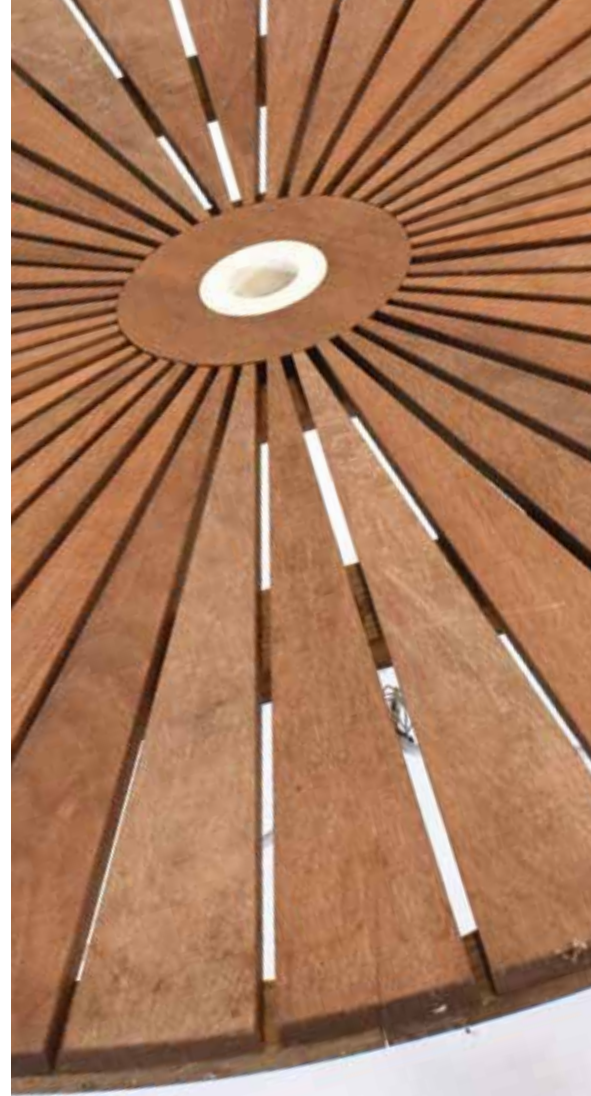
A 1930's bamboo  
magazine rack of  
scrolled form

**Est £30 - £50**

72

A cast metal Brutalist-  
type sculpture modelled  
as a cockerel, h. 115 cm

**Est £60 - £100**



illustrated: lot 72, 73



75



- 75 Debbie and Patrick Burnham (contemporary),  
A Steinway piano with an open window and  
sunset in the background,  
stamped verso, applied textile hanging,  
image 84 x 87 cm

**Est £100 - £150**

77



- 73 A Danish teak slatted  
garden table by Daneline,  
the surface sunburst  
form on white tubular  
legs, d. 100 cm

**Est £80 - £120**

- 74 A pair of iGuzzini  
Illuminazione wall lights,  
the globular shades on  
green shafts

**Est £80 - £120**

- 76 Louis Zelig  
(Swedish, b. 1922),  
A still life, jug and  
flowers,  
signed,  
oil on canvas,  
image 46 x 36 cm,  
together with another by  
the same hand (2)

**Est £80 - £120**

- 77 A three-panel plan of  
Silverstone race track,  
presumably for team  
planning, 77 x 112 cm

**Est £40 - £60**

78



78

Adolf Relling and Rolf Rastad for Rasmus Solberg, a Norwegian teak sewing table or side table, the circular flap surface lifting to reveal a swivel fitted tray over a suede basket suspended below, with three circular legs joined by stretchers, d. 59 cm \*\*1st Price Norwegian Design Competition 1962' label to the interior

**Est £150 - £250**

79

A woollen wall hanging depicting an American flag embossed with the words 'God Bless America', 70 x 53 cm excl. frame and mount

**Est £80 - £120**

80

A 1970's Danish black leather three-seater sofa on an aluminium base \*SFP

**Est £300 - £400**





- 81** Tamara Aladin for Riihimäki, a red-glass ribbed jug together with a similar vase (2)

**Est £30 - £50**



- 82** A group of three Riihimäki glass vases (3)

**Est £30 - £50**

- 83** Tamara Aladin for Riihimäki, a green-glass vase of unusual form, h. 28 cm

**Est £20 - £30**

- 84** Gunnar Ander for Lindshammar, an aqua glass vase of elliptical form with horizontal and vertical grooves, h. 20 cm

**Est £30 - £50**



- 85** Erkkitaipio Siirinen for Riihimäen, a clear-glass 'Kasper' vase of large proportions, h. 30 cm

**Est £30 - £50**



86

In the manner of Arthur Percy, a group of three green glass vases, max. h. 51 cm

**Est £40 - £60**

87

A Swedish single-dimple vase by Elme Glasbruk, h. 25 cm, together with another purple vase by the same factory (2)

**Est £20 - £30**

88

A Swedish red glass vase by Alsterfors, h. 26 cm

**Est £20 - £30**

89

A 1970's perforated brass trolley with two tiers, decorative front wheels and a single rear support

**Est £50 - £80**

89



91



90

A 1960's Danish teak and brass standard lamp with an associated shade

**Est £50 - £80**

91

Russell Watson, a 1980 handcrafted sycamore sculpture, signed, h. 42 cm

**Est £80 - £120**





- 92** A 1980's black-painted bamboo and rattan armchair of fan form

**Est £50 - £80**

- 94** A 1970/80's chromed floor lamp with a semi-spherical shade and tulip-type base

**Est £50 - £80**

- 95** A pair of 1970's spun aluminium table lamps of gourd form with modern shades, h. 48 cm each excl. shades

**Est £80 - £120**

- 93** Attributed to PEL (Practical Equipment Ltd), a 1930's Modernist elbow chair with black vinyl upholstery and a tubular frame \*SFP

**Est £60 - £100**



96

A set of four 1980's Italian Memphis-style armchairs with red and black lacquered bodies

**Est £200 - £300**



97

A British tubular and brass-finished hall stand with a mirror back, h. 179 cm

**Est £60 - £100**

98

A 1970's beech framed wall mirror with stained teak highlights, overall 116 x 70 cm

**Est £80 - £120**

99

A Danish white enamelled four-spot semi-spherical ceiling light

**Est £50 - £70**

100

A 1970's Danish grey enamelled pull-down ceiling light

**Est £40 - £60**



101



101

Illum Wikkelsø for CFC Silkeborg, a rosewood and crossbanded folding table set, the main table containing three smaller examples, badge to underside, 59 x 40 x 50 cm

**Est £1,000 - £1,500**

102

Cees Brackman for Pastoe, a Dutch rosewood occasional table with a black metal frame and a detachable metal mesh tier, 52 x 44 cm

**Est £200 - £300**

103

Richard Young for Merrow Associates, a nest of three 1960's rosewood and chrome nesting occasional tables

**Est £400 - £600**

103





104



104

Josef Hospodka for Chribska, a pink and yellow glass dish of flower-form, w. 19 cm, together with a blue example by the same factory (2)

**Est £30 - £40**

105

A 1960/70's Swedish grey-glass vase of flat open form, h. 13 cm, together with another vase (2)

**Est £20 - £30**

110



106

A group of four Whitefriars glass open bowls (4)

**Est £40 - £60**

107

A grey smoked-glass decanter attributed to Dartington, a grey dimple vase and a moulded glass decanter and vessel set (4)

**Est £30 - £40**

106



108

A group of English glass including Wedgwood, Whitefriars etc. (6)

**Est £30 - £40**

109

1950's African School, Three stylised figures, indistinctly signed, gouache on a black ground, image 15 x 24 cm, together with three others in the same set (4)

**Est £30 - £40**

110

A 1960's plywood 'pop-out' ceiling light shade with an inner diffuser and brass clips in the manner of Louis Weisdorf

**Est £40 - £60**







- 111** A set of Italian polka-dot pottery, numbered 4254, including a tazza, pair of vases, pair of covered pots and three bowls, flower motifs to the undersides (8)

**Est £50 - £80**

- 114** A group of 1980's printer's 'first proof' posters relating to Grenalls Bitter, Hansa Lager and Mansfield, 30 x 61 cm each (5)

**Est £40 - £60**

- 115** William Plunkett for WP Furniture, a 'Kingston' ottoman upholstered in brown leather on a chromed frame, label to the underside \*SFP

**Est £200 - £300**

- 112** A group of 1980's printer's 'first proof' posters relating to Rowntree Mackintosh chocolates and sweets including Mints, Aero, After Eights, Brick etc., most 43 x 76 cm (7)

**Est £50 - £80**

- 113** A group of 1980's printer's 'first proof' posters relating to Captain Morgan Caribbean Rum, Brown Ale, Kestrel, Tuborg, Maxim Light etc., 43 x 76 cm each (8)

**Est £60 - £80**



116



116

Robin Day for Hille, a 1950's Hillestak chair  
\*The U-shaped leg joints show that this is an early edition

**Est £150 - £200**

117

Jonathan De Pas, Donato D'Urbino and Paolo Lomazzi for Poltronova, an early 1970's 1st Edition black leather 'Joe' armchair in the form of a baseball glove, embossed star to the right hand side \*Designed in 1970 and inspired by the Pop Art Movement, the Joe chair is a homage to the legendary American baseball star Joe DiMaggio.

**Est £500 - £800**

118

Wells Coates for Kingfisher Limited of West Bromwich, a Bauhaus Period 'Kingfisher' desk, the later vinyl surface over an oak frame, black tubular legs and four-drawer pedestal, badge to the frame, 114 x 61 cm \*Also manufactured by PEL (Practical Equipment Ltd)

**Est £800 - £1,200**

118





- 119** A.J. Milne (Andrew John) for Heal & Sons, a 1950's rosewood extending dining table on two tapering columns each with three black splayed legs, 165-209 cm x 101 cm  
**Est £1,000 - £1,500**

- 121** A 1960's Danish teak and crossbanded occasional table with a second spindle tier, 107 x 54 cm  
**Est £50 - £80**

- 122** A 1960's Danish teak chest of six drawers on turned legs, w. 70 cm  
**Est £100 - £150**

- 120** A 1960's Danish beech bow-fronted chest of six drawers with integral circular handles and tapering legs, w. 81 cm  
**Est £100 - £150**



123



123

A Danish pine twin-pedestal desk on square straight legs,  
135 x 59 cm

**Est £120 - £150**

124

A Danish oak tambour cabinet on a plinth base

**Est £60 - £100**

124



125

A 1960/70's Danish teak two-door corner cabinet on tapering legs

**Est £60 - £100**

126

A Danish 'Toppic' white enamelled four-tier ceiling light by Design Light

**Est £40 - £60**

128



127

A 1970's Danish white enamelled three-tier ceiling light

**Est £30 - £40**

128

John and Sylvia Reid for Stag, a teak circular coffee table on aluminium straight legs, d. 75 cm

**Est £80 - £120**



- 129** A Gordon Russell of Broadway walnut nest of three tables, max. w. 61 cm

**Est £40 - £60**



- 130** A grey enamelled counterbalance desk lamp by Hadrill & Horstmann

**Est £100 - £200**



- 131** In the manner of Val St Lambert, a green art glass table centre, w. 41 cm

**Est £30 - £40**



- 132** A Stockman half-scale mannequin, h. 41

**Est £50 - £80**

- 133** Arne Vodder for Sibast, a 1960's teak and upholstered spindle-back rocking chair, badges to underside \*SFP

**Est £400 - £600**

134



134

A Frederick Scott 'Supporto' desk chair with yellow upholstery and a black frame, on a five-star swivel base with castors \*SFP

**Est £200 - £300**

136

A 1960's Danish teak and brass standard lamp with an associated shade

**Est £40 - £60**

138

Two 1960's Danish turned teak standard lamp bases

**Est £80 - £120**

139

A Danish aluminium standard lamp with an associated shade

**Est £30 - £50**

135

Robin Day for Hille, a 1960's shell chair with a red cushion and aluminium four-star base \*SFP

**Est £30 - £50**

137

A 1960's Danish teak standard lamp with brass sections and an associated shade

**Est £40 - £60**

140

A 1970's chromed adjustable arc-type floor lamp

**Est £50 - £80**







- 141** A group of glass including a Mdina bottle vase, a pair of iittala tealight holders etc. (6)

**Est £50 - £80**

- 142** A Whitefriars 'Optic Ribbed' vase, h. 20 cm, together with a smaller blue vase (2)

**Est £40 - £60**

- 146** A West German pottery vase, a Guernsey Pottery dish decorated with a spider's web and a set of three Crown Devon kitchen cannisters (5)

**Est £30 - £50**



- 143** Signe Kolding (Danish), a studio pottery bowl of sculptural form, signed, d. 23 cm, together with a vase by the same hand, h. 13 cm

**Est £120 - £150**



- 144** David Sharp for Rye, a ceramic figure of a mouse on cheese, together with a 1950's Italian vase, a pair of Carltonware cruets in the form of maids etc. (6)

**Est £40 - £60**

- 145** A pair of orange and aluminium desk pieces (2)

**Est £30 - £40**

- 147** A Midwinter Stylecraft Fashion Shape six-sitting tea service decorated with autumnal leaves

**Est £30 - £50**



- 148** 'TimeBeam Projects' by Design, an analogue projector clock in the Memphis style with a red, yellow and blue perforated body, boxed

**Est £200 - £300**

- 149** A 1960's Danish teak highboard or cabinet, the superstructure with two tambour doors and a fall front, over a gallery and arrangement of two doors with five drawers, on tapering legs, l. 167 cm

**Est £400 - £600**



- 150** A 1950/60's Danish walnut highboard or cabinet in the manner of Kai Kristiansen with two sliding doors and six drawers, on turned legs, w. 160 cm

**Est £400 - £600**

- 151** A floor-standing glass vase decorated in the end-of-day manner with various colours on a deep red ground, h. 100 cm

**Est £120 - £180**



- 152** A Val St Lambert Belgium pink cased-glass lamp of spiral form, label to the base, h. 30 cm

**Est £80 - £120**

- 153** A Val St Lambert Belgium pink cased-glass lamp of spiral form, label to side, h. 30 cm

**Est £80 - £120**



- 154** A group of reference books relating to sculpture, photography and the body including: 'Taschen: Aesthetic Surgery', 'Judith Collins: Sculpture Today', 'David Bailey: Archive One' etc.

**Est £60 - £80**

- 155** In the manner of Poul Christiansen for Le Klint, a pair of hand-pleated acrylic ceiling light shades

**Est £60 - £100**

- 156** A group of Murano, Mdina and other glass together with a metallic glazed Poole jar and cover (8)

**Est £40 - £70**

- 157** In the manner of Bo Ljungberg & Holger Backstrom, a set of three 1970's 'Ultima'-style brass ashtrays, w. 15 cm and 9 cm

**Est £40 - £70**

- 158** A group of three Murano and Toffolo Venetian Glass art clowns, two with paper labels, max. h. 31 cm

**Est £60 - £90**

- 159** A Royal Copenhagen bowl, the yellow green with gilt and blue decoration in the Persian manner, d. 26 cm

**Est £30 - £40**

- 160** Ray Marshall ((1913-1986)), a stoneware 'Scroll' cup, single initial to the underside, h. 8 cm

**Est £40 - £60**





**161** A 1970's Italian flower sputnik hanging lamp

**Est £60 - £100**

**162** A 1960's Danish four-seater sofa upholstered in green, on teak tapering legs, l. 232 cm \*SFP

**Est £500 - £700**

**163** A 1960's Danish lowback armchair upholstered in green, on teak tapering legs \*SFP

**Est £200 - £300**

**164** A 1960's Danish three-seater sofa upholstered in orange designed by Borge Mogensen, l. 210 cm

**Est £150 - £200**





- 165** A Danish white enameled pull-down ceiling light

**Est £30 - £40**

- 167** A 1950's French iron etagere or side table with decorative brass lion head masks, 77 x 46 cm

**Est £100 - £150**



- 166** A 1970's Danish white enameled ceiling light

**Est £30 - £40**

- 168** Hand Bunde for Cohr, a pair of Danish silver-plated tea and coffee pots

**Est £30 - £40**



- 169** A pair of 1960's Bernard Rooke pottery table lamps of brickwork form, h. 45 cm, together with later shades

**Est £200 - £300**

- 170** A pair of Continental bamboo and rattan table lamp bases of cuboid form, h.43 cm excl. fittings

**Est £150 - £200**



- 171** Attributed to Gucci, a pair of 1970's brass and cream table lamps, h. 55 cm, together with later shades

**Est £150 - £200**

172



172

A 1950's Heals of London walnut dressing table with a triptych mirror, three frieze drawers and tapering legs, badge to drawer, w. 117 cm

**Est £200 - £300**

173

A pair of 1960's vanity mirrors with circular plates on adjustable stems and later plinth bases

**Est £80 - £120**

174

A nest of three Ercol 'Pebble' occasional tables in stained elm and beech, max. w. 65 cm

**Est £150 - £200**

175

A 1960's Danish teak sewing table with a fitted drawer, hanging basket and square straight legs on castors, w. 63 cm

**Est £50 - £80**

176

Magnus Olesen for Durup, a Danish beech and laminate occasional table of triangular form on bentwood legs, label to underside, w. 71 cm

**Est £50 - £80**



179



177

A Swedish pine LP cabinet or console table on later legs, l. 134 cm

**Est £30 - £50**

178

A Danish beech and laminate two-tier trolley with detachable trays, d. 59 cm

**Est £30 - £40**

179

A 1960's Danish teak sewing table with two concealed swivel compartments, d. 54 cm

**Est £80 - £120**

182



180

A 1950's walnut lamp of boomerang form, the diagonal arc suspending a single spot

**Est £60 - £80**

181

Ingmar Relling, a 1970's 'Siesta' armchair with a bentwood frame and brown button upholstery \*SFP

**Est £150 - £200**

182

Attributed to Alf Svensson for Dux, a 1960's reclining armchair with an oak frame, Danish Control Badge to the underside \*SFP

**Est £250 - £300**





- 183** A 1970's Domino Mobler teak cabinet with two sliding doors, on later turned legs, label to rear, l. 122 cm

**Est £50 - £80**

- 184** An Australian teak coffee table by Macro Furniture with angular supports and a slatted second tier, 150 x 58 cm

**Est £80 - £120**



- 185** A 1980's chromed and brown vinyl barber's chair \*SFP

**Est £50 - £80**

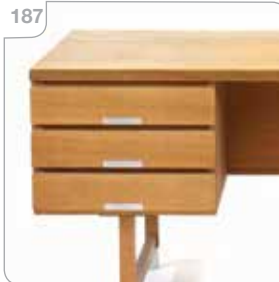
- 186** George Mulhauser for Plycraft Corp, a pair of American 'Sultana' chairs, c. 1965, with red bent plywood frames and black vinyl seats \*SFP

**Est £800 - £1,200**



- 187** A Danish oak and crossbanded desk with an arrangement of six drawers, on square straight legs with aluminium caps, divided gallery to the rear, 155 x 74 cm

**Est £150 - £200**





- 188** A Danish white enameled four-tier open ceiling lights by Lyfa

**Est £40 - £60**

- 190** A Danish white enameled four-tier ceiling lights of small proportions

**Est £30 - £50**

- 191** A pair of French 1970's figural table lamps modelled as koi with gold-plated bodies, mounted on portoro marble plinths, with associated cream shades, h. 90 cm

**Est £300 - £500**

- 192** A 1960's teak cruciform or rocket shaped floor lamp with a later shade, h. 115 cm

**Est £150 - £200**

- 189** A Danish white enameled pull-down ceiling light

**Est £30 - £40**







- 193** A pair of 1970's Stiffel brass lamps with undulating bodies and later shades, h. 115 cm

**Est £80 - £120**

- 194** A pair of 1970's Swedish table lamps with brass mounts by Bergboms, h. 48 cm

**Est £60 - £100**

- 195** A 1960's Modernist tubular steel Italian table lamp in the manner of Gio Ponti, h. 60 cm

**Est £100 - £150**



**196**

- 196** Gareth Reynolds for Reynolds of Ludlow, a pair of 1950's yew wood chairs, stamped to the undersides

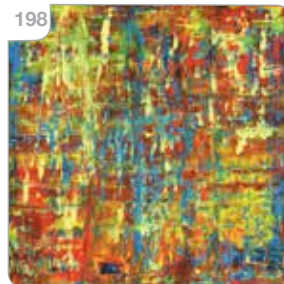
**Est £80 - £120**

- 197** Rachel Jack (contemporary), An abstract seascape, oil on canvas, 70 x 180 cm

**Est £60 - £80**

- 198** Terry Wood (Hertfordshire), Reds, yellows, greens and blues, signed verso, oil on canvas, 75 x 76 cm

**Est £30 - £40**



**198**



199



199

A Boss Design two-seater 'Layla' sofa in cream leather on an aluminium frame

**Est £200 - £300**

200

A 1950's British walnut sideboard in the manner of Archie Shine, with six drawers and two doors, brass handles and cruciform legs, l. 196 cm

**Est £300 - £400**

201

Johannes Andersen For Christian Linneberg, a set of four Danish rosewood Model 94 dining chairs \*SFP

**Est £500 - £700**



**202** Front for Moroso, a brown leather 'Doodle' armchair designed in 2013, the shape reminiscent of a folded blanket \*Moroso's marketing reads 'Seated on the echo of a thought... From the hand which unconsciously doodles during a phone call, lines of thought sprint out.' The three members of Front merged their absent minded doodles from design meetings to form the inspiration for this chair.

**Est £1,500 - £2,000**

203

Hawker Engineering Ltd.  
a 1940's aluminium  
wardrobe, h. 183cm

**Est £800 - £1,200**

204

Hawker Engineering Ltd.  
a 1940's aluminium  
dressing table, w. 120cm

**Est £800 - £1,200**

\*Hawker were the famous manufacturers of the Hurricane aircraft. During the 1920's-1940's they also produced a range of bedroom furniture which was used in RAF bases across Europe.

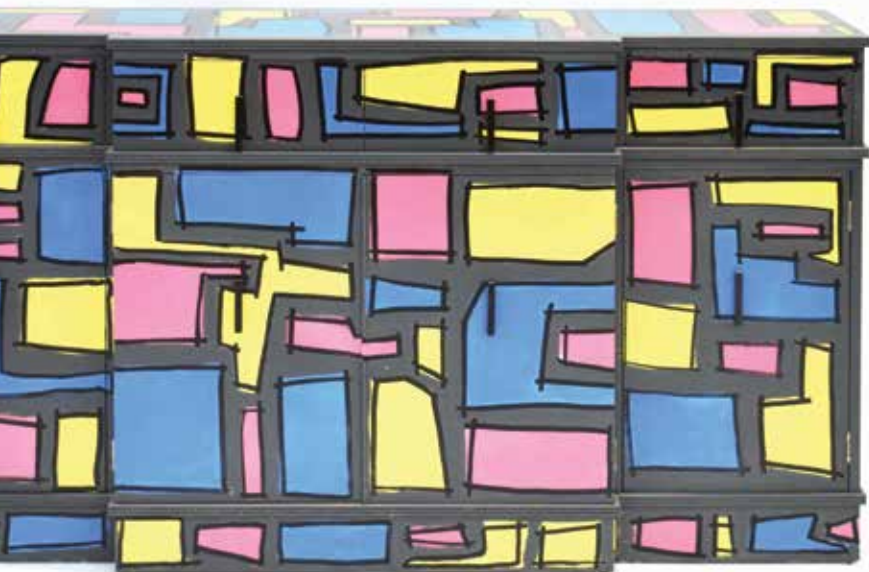
204





Alan Fears (b.1974) is a British artist currently based in Nottinghamshire, England. He was featured and commissioned for the summer cover of 2019's issue of the *Paris Review* and also shortlisted for the John Moores Painting Prize in 2018. Elsewhere he was commissioned to design and animate fashion brand Marni's short film 'A Rumble in the Jungles of Paris'. He has sold paintings to Noel Fielding and Cillian Murphy.

Lots 205-212 are examples of his experimental works before he became a full-time artist.



206



205

Alan Fears (b.1974), a break-front sideboard overpainted with liquorice colours on a grey ground, signed and dated 2015 verso, l. 165 cm

**Est £300 - £400**

206

Alan Fears (b.1974), a two-door sideboard overpainted with 'graffiti' and doodles, signed and dated 2016 verso, l. 135 cm

**Est £300 - £400**



**207** Alan Fears (b.1974), a chest of five drawers overpainted with coloured blocks and text, signed and dated 2014 verso, w. 84 cm

210

Alan Fears (b.1974), a low coffee table with a central tinted mirror storage well, overpainted in a freeform tribal design, 137 x 87 cm

210



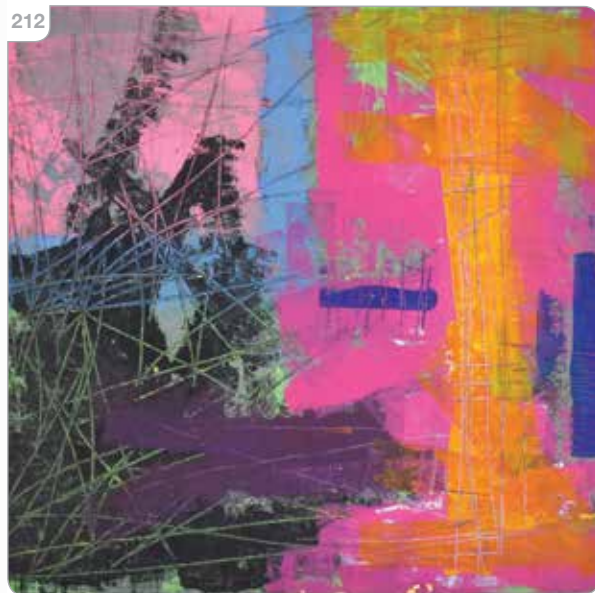
**208** Alan Fears (b.1974), a sideboard overpainted with pink, green and blue camo, signed and dated 2015 verso, l. 60 cm

**209** Alan Fears (b.1974), a two-drawer side table overpainted with aqua on a white ground, unsigned, w. 91 cm

A vibrant, abstract piece of furniture, possibly a cabinet or desk, featuring a bold, multi-colored pattern (pink, blue, green, yellow) and a black base. The pattern consists of large, irregular, brush-stroke-like shapes in various colors. The furniture has a black, T-shaped base. The top part is a cabinet with a large door on the left and three drawers on the right, all featuring the same colorful pattern. The drawers have black circular handles. The overall style is modern and artistic.



212



**211** Alan Fears (b.1974),  
An abstract fire,  
unsigned,  
c. 2009,  
oil on board,  
183 x 67 cm

**Est £200 - £300**

**212** Alan Fears (b.1974),  
An abstract with pinks,  
greens and yellows,  
unsigned,  
oil on board,  
81 x 86 cm

**Est £80 - £120**

213



213

A 1960's Danish highback armchair upholstered in mustard, on teak legs \*SFP

**Est £250 - £300**

214



214

A 1960's Danish lowback armchair upholstered in green on teak tapering legs \*SFP

**Est £200 - £250**

215



215

A Danish wingback armchair by Stouby upholstered in dark brown \*SFP

**Est £300 - £400**

216

A 1960's walnut and crossbanded two-tier trolley on black tubular legs with castors, 65 x 41 cm

**Est £50 - £80**

217

Bent Olsen for Vejle, a 1970's beech bentwood armchair with webbed seat and fabric headrest, label to the underside \*SFP

**Est £100 - £150**

218

Gustav Axel Berg For Bröderna Anderssons, a Swedish 1960's bentwood and webbed easy chair, stamp to underside

**Est £150 - £200**





- 219** A Danish teak and crossbanded desk with an arrangement of six drawers, on tapering supports, open gallery to the reverse, 121 x 60 cm  
**Est £150 - £200**

- 221** A 1970's Danish ceiling light of small proportions by Jeka  
**Est £40 - £60**

- 223** A 1970/80's 'Space Age' uplighter with a grey enamelled body  
**Est £80 - £120**



- 219** A 1950/60's Danish beech double tambour-fronted cabinet on a plinth base, w. 88 cm  
**Est £200 - £300**

- 222** A 1970's Danish five-tier white enamelled ceiling light  
**Est £40 - £60**

- 224** Tatiana Rogach...(?), 'Prague 2001', signed and dated verso, oil on board, image 84 x 89 cm  
**Est £60 - £100**





- 225** Albano Poli for Poliarte, a 1970's Italian floor lamp, the aluminium shaft supporting three circles relief decorated with coloured perspex and three spots

**Est £300 - £500**



- 226** Carlo Nason for Mazzega, a 1960's Italian glass floor lamp with opaque and orange sections, h. 120 cm

**Est £400 - £600**



- 229** A set of five Brutalist steel lacquered and bronzed double-spot wall lights by Marlin

**Est £80 - £120**



- 227** A 1970's French bent steel Monnet-style coffee table, d. 90 cm

**Est £150 - £200**

- 228** A 1960/70's bent steel coffee table base of structural form, l. 82 cm

**Est £40 - £60**





- 230** A natural wood table lamp of moon form, ink stamp to base (illustrated), h. 42 cm

**Est £40 - £60**

- 232** A 1970's German teak magazine rack by Opal Kleinmotel, label to the underside

**Est £40 - £60**

- 235** Nicolas Hayek for Swatch, a 1980's Swatch Maxi Nautilus wall clock, together with the original box

**Est £80 - £120**



- 236** Nicolas Hayek for Swatch, a 1980's Swatch Maxi Nautilus wall clock, lacking connectors, together with three further part straps

**Est £60 - £100**

- 231** Two 1960's British brass and hammered copper umbrella stands in the form of cowboy boots with spurs

**Est £80 - £120**

- 233** A 1950's Worcester ware metal magazine rack decorated with musical instruments on a black ground, in the style of Fornasetti

**Est £40 - £60**



- 234** A 1980's red acrylic table lamp with a cast alloy base, h. 39 cm

**Est £100 - £150**



237



238



237

Rodney Kinsman for  
OMK, a 1978 Sanpan  
S302 pressed steel  
standard lamp enamelled  
in black and yellow, label  
to the base

**Est £300 - £500**

238

Leila and Massimo  
Vignelli for Casigliani, a  
1979 Italian 'Metafora'  
sculptural coffee table  
including four marble  
shapes, lacking glass  
surface

**Est £300 - £400**

239

A 1970's Austrian brass  
six-tier chandelier with  
ice glass droplets by J.T.  
Kalmar, d. 73 cm

**Est £500 - £700**

240

A 1970's French white  
floor lamp modelled as a  
vine, the three spots with  
opaque glass shades in  
the form of bunches of  
grapes

**Est £300 - £500**

- 241** A group of five bronzed resin table lamp bases in the manner of Henry Moore

**Est £100 - £150**

**241**



**242**



- 242** A 1950's marquetry laminate occasional table on ebonised and brass capped tapering legs, 60 x 45 cm

**Est £60 - £100**

**243**

- 243** Arne-Wahl Iversen for Brenderup, a 1950's Danish teak bar cabinet, the pair of doors enclosing a fitted interior, over a laminate slide, on square straight legs, w. 90 cm

**Est £400 - £600**





- 244** A 1986 Daffodil floor lamp designed by Peter Bliss, label to the base  
**Est £80 - £120**

- 245** A pair of 1960's fibreglass and mixed media abstract relief wall panels, 136 x 61 cm each  
**Est £120 - £150**

- 246** A pair of 1980's white perspex standard lamps of triangular form with black plinths and tops  
\*Used by the British electronic band 'The KLF'  
**Est £150 - £250**

- 247** A vintage French mannequin (Fifi) by Fery Boudrot Paris - Model 162  
**Est £50 - £80**

- 248** Ingmar Relling for Ekornes Svang, a pair of 1960's Norwegian 'Svanette' teak and upholstered daybeds \*SFP

**Est £800 - £1,200**

**249**



**249**

- A 1970's Italian dining table by Renato Zevi, the glass and chromed surface resting on a central column, 140 x 140 cm

**Est £200 - £300**

**244**



**250**

- A three-fold metalwork screen or divider inset with coloured panels

**Est £60 - £100**

**251**

- A 1960's Danish teak and crossbanded desk, the two pedestals with an arrangement of six drawers, on turned beech legs, 120 x 60 cm

**Est £150 - £200**

**251**



**252**



**252**

- A 1960's Danish teak and crossbanded desk by Luno Mobler, the cushioned surface with two suspended three-drawer pedestals below, doors to the reverse, on beech tapering legs with teak caps, stamp to the underside, 151 x 77 cm

**Est £300 - £400**



- 253** A 1960's Danish teak sideboard with three doors and four drawers, scrolled handles and tapering legs, l. 206 cm

**Est £300 - £400**



- 254** A 1970's Danish white enamelled four-tier ceiling light

**Est £30 - £40**

- 255** A Danish white enamelled three-tier ceiling light

**Est £30 - £40**

- 256** An Ercol elm sideboard, Model 469, with three doors and three drawers, l. 130 cm

**Est £200 - £300**

- 257** An Ercol Windsor elm cabinet with two doors and two drawers on a plinth base, w. 91 cm

**Est £150 - £200**

- 258** An Ercol elm and beech 'Chairmaker's armchair', Model 472

**Est £150 - £200**



- 259** An Ercol beech  
'surfboard' daybed or  
studio sofa, Model 335  
\*SFP

**Est £700 - £900**

- 260** A pair of American style  
'ballroom' or 'stateroom'  
lights with blue  
enamelled bodies

**Est £150 - £200**

- 261** An Italian cream  
enamelled adjustable  
floor lamp by Elleluce

**Est £150 - £200**

- 262** A 1950/60's perforated  
steel and teak  
magazine rack

**Est £40 - £60**





**263** Pierre Paulin for Artifort, an F444 armchair with tan leather slung seat and tubular frame, label to underside

**Est £2,000 - £3,000**

**264** Michel Ducaroy for Ligne Roset, a 'Togo' two-seater sofa in orange, with tag and markings to the underside, l. 127 cm

**Est £600 - £1,000**





## Mid-Century Design Soft Furnishings Policy

The Furniture and Furnishings (Fire) (Safety) Regulations 1988 (as amended in 1989 and 1993) state that all soft furnishings holding foam must conform to BS 5852 standards. This means that any post-1988 furniture will need to bear a fire label for auction purposes.

The following exceptions apply:

- Items constructed pre-1950. [Regulation 4(a)]
- Items being sold to someone who is in the business of reupholstering furniture. [See Regulation 4[b] and Consumer Protection Act 1987, s.46(7)]
- Items being sold to someone who is in the business of dealing in furniture. [Regulation 14(1)]
- Items being sold that will not be used in a domestic setting in the UK; e.g. for export, for use in a museum or theatre, as a work of art. [Regulation 3(1a) and 4(c)]

The Mid-Century period has been recognised as an area of increased interest to collectors for many years now. The relevant soft furnishings in our sales have been carefully selected to be collector's pieces which are purchased for their design qualities.

Soft furnishings in this sale are being sold as collector's items and are NOT intended for private use in the UK. They may not be in compliance with the Furniture & Furnishings (Fire)(Safety) Regulations 1988 and should be re-upholstered to conform to BS 5852 prior to any use in a domestic dwelling.

Bids are only accepted on the agreement that the furnishings will not be used in a domestic dwelling in the UK.

This policy is in-line with all major UK auctioneers and the Mid-Century trade.

265



265

A 1960/70's Danish woolen rug in hues of red, 234 x 170 cm

**Est £150 - £200**

267

In the manner of Alvar Aalto's 'Screen 100' for Habitat, a 1980's ebonised tambour room divider, h. 180 cm

**Est £200 - £300**

266



266

In the manner of Alvar Aalto's 'Screen 100' for Habitat, a 1980's pine tambour room divider h. 180 cm

**Est £200 - £300**

267



268

In the manner of Alvar Aalto's 'Screen 100' for Habitat, a 1980's ebonised tambour room divider, h. 180 cm

**Est £200 - £300**



269



269

Lindsey Balkweill  
(Lindsey B), a 1985  
ceramic 'Peking' jar and  
cover, signed, h. 32 cm

**Est £100 - £150**

270



270

Morris Rushton for  
FleshPots (Flesh Pots),  
a set of three stacking  
casserole dishes and  
covers modelled as the  
female form

**Est £300 - £400**

271

Morris Rushton for  
FleshPots (Flesh Pots),  
a 'Hollywood Greats'  
ceramic head modelled  
as Judy Garland

**Est £50 - £80**

272

Morris Rushton for  
FleshPots (Flesh Pots), a  
plain 'Hollywood Greats'  
ceramic head modelled  
as Charlie Chaplin,  
unsigned

**Est £50 - £80**

273

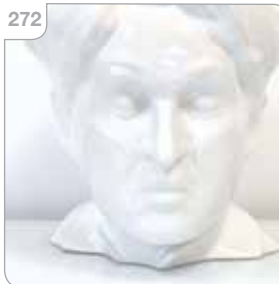
Morris Rushton for  
FleshPots (Flesh Pots), a  
plain 'Hollywood Greats'  
ceramic head modelled  
as Elvis Presley, unsigned

**Est £50 - £80**

271



272



273



- 274** A French clutch bag in the form of a rolled-up magazine 'La Mia Casa'

**Est £30 - £40**

- 275** Ringo Starr and Robin Cruickshank for RoR Ltd, a set of three 1970's mirror tiles, unsigned, each 9 inch square

**Est £150 - £200**



- 276** Ringo Starr and Robin Cruickshank for ROR, a pair of 1970's lounge tables, the brushed steel bases supporting tinted glass surfaces, RAR label to the base, 76 x76 cm

**Est £300 - £400**



- 277** Guy Lefevre for Ligne Roset, a French 1970's cocktail table, the two marbleized laminate surfaces sliding to reveal internal storage, on a brushed aluminium base, 125-195 x 64 cm

**Est £400 - £600**

- 278** Late 20th Century School, An abstract marketplace featuring Red Cheese, unsigned, oil on board, 184 x 123 cm

**Est £300 - £500**



- 279** Kate Braine (b. 1964), a bronze model of an outstretched hand, l. 15 cm

**Est £200 - £300**



- 280** A 1960's abstract hammered and textured copper relief wall panel, 58 x 27 cm

**Est £40 - £60**

- 281** A 1960's Gelo Italian six-spot chandelier with twenty-four acrylic form drops on a chrome frame

**Est £150 - £200**

- 282** Jane Brewer for Poole, a Studio vase depicting 'Chesil Cottage & Portland', h. 26 cm

**Est £50 - £80**

- 283** A marble sculpture modelled as a female torso, h. 28 cm

**Est £30 - £50**



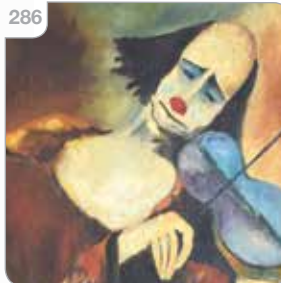
- 284** Fantasque by Clarice Cliff, a Bizarre Range bowl decorated in the 'Carpet' pattern, d. 20 cm

**Est £200 - £300**

- 285** A 1960's six-sitting coffee service decorated with black and white abstract shapes, originally purchased in Singapore

**Est £60 - £100**

**286**



- 286** In the manner of Daniel O'Neill (Irish, 1920-1974), A clown playing a violin to a child, signed top left corner, oil on canvas, 91 x 46 cm

**Est £200 - £300**

287



287

Attributed to Ephraim (Fima) Rotenberg (1914-2005),  
A head and shoulders portrait of an Orthodox Jew,  
signed and dated '65,  
ink and wash,  
image 63 x 45 cm,  
together with another by the same hand (2)

**Est £200 - £300**

288

Lorna Taylor (20th Century),  
'Lying Air',  
signed, dated 79 and numbered 12/40,  
screenprint,  
image 62 x 53 cm,  
together with another by the same hand (2)

**Est £40 - £60**

289



289

Rinaf (presumably Israeli),  
A series of connections  
on a red abstract ground,  
signed and dated 1963,  
mixed media,  
image 69 x 48 cm

**Est £80 - £120**

290



290

For Refurbishment: a set  
of five club armchairs  
with various leather  
cushions and four swivel  
bases \*SFP

**Est £80 - £120**



- 291** For Refurbishment:  
Ludwig Mies van der  
Rohe, a 'Brno' chair with  
flat chromed frame \*SFP  
**Est £60 - £100**



- 292** For Refurbishment: a pair of chrome Z-framed armchairs  
with vinyl upholstery in the manner of William Plunkett and  
Milo Baughman \*By repute these chairs were designed for  
the QE2 liner \*SFP  
**Est £100 - £200**

- 293** A set of four 1980's  
disco light shades  
**Est £50 - £80**



- 294** Vico Magistretti for Gavina, a 1960's Italian 'Caori' table,  
the stainless surface with a lift-up compartment revealing  
a hidden storage section, the matte white lacquered  
surrounds with two flip-down compartments and two  
drawers, 127 x 96 cm  
**Est £400 - £600**



**295**

For Refurbishment: Philippe Starck for Cerruti Baleri, a 1984 Italian 'President M' dining table, the steel legs covered by a black powder finish, with a square glass surface, 136 x 136 cm

**Est £100 - £200**

**296**

A near pair of 1960's oak framed theatre or cinema mirrors in the Art Deco style, l. 263 and 274 cm respectively

**Est £400 - £600**

**297**

A 1970's brass finished bow-fronted etagere with four glass shelves, w. 140 cm

**Est £100 - £150**



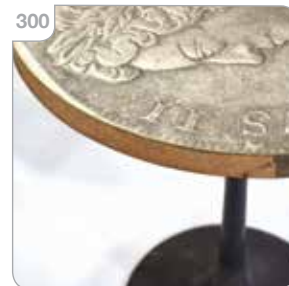


- 298** A 1970's spun aluminium chandelier with suspended conical sections in the manner of Gaetano Sciolari

**Est £150 - £200**

- 299** For Refurbishment: a collection of 1970's lighting with a variety of pink glass drops, perspex spiral droplets, smoked glass panels etc.

**Est £100 - £150**



- 300** A pair of 1960's 'Crown' tables with tulip-type bases by Arkana, d. 61 cm

**Est £200 - £300**



- 301** A 1990's Heals tan leather sofa of Art Deco form, labelled

**Est £300 - £500**

302



302

Greaves & Thomas,  
a 1960's 'Put-u-Up'  
Davenport Villager sofa  
bed with sculptural  
afromesian arms \*SFP

**Est £300 - £500**

303

Attributed to Mart Stam  
for Fasem, a set of  
three S33 black leather  
and chromed framed  
cantilever chairs,  
circa 2001

**Est £100 - £150**

304

Eero Saarinen for Knoll  
International, a 'Tulip'  
armchair, modelled name  
to underside, together  
with a matching side  
chair (2)

**Est £80 - £120**

305

For Refurbishment: a  
Robert Dudley Best  
'Bestlight' table lamp,  
c. 1940's

**Est £50 - £80**

306



307



306

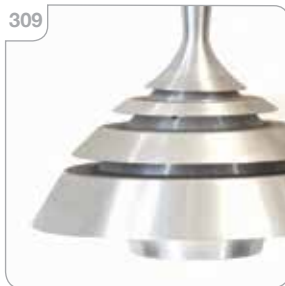
Sori Yanagi for Vitra  
Design Museum, a 2002  
Re-edition 'Butterfly'  
stool

**Est £150 - £200**

307

Strand 'Rank' theatre  
spotlight on a matching  
adjustable tripod stand

**Est £150 - £200**



**309** A 1970's Danish spun aluminium ceiling light  
**Est £40 - £60**

**308** A 1960's Danish oak bookcase cabinet, stamped with Control badge, w. 100 cm  
**Est £100 - £150**



**311** A group of twelve 1950's ceiling lights, each with a coloured glass shade and brass shaft, together with two further loose shades (14)  
**Est £300 - £500**

**312** After Mies van der Rohe, a 1970/80's 'Barcelona'-type armchair with black leather cushions and a flat chromed frame \*SFP  
**Est £100 - £150**

**313** For Reupholstery: Charles and Ray Eames for Hille, a pair of 1960's 670 lounge chair armrests \*Hille held the license from Herman Miller for UK rights during the 60's and 70's.  
**Est £50 - £80**

**314** A group of late 20th century studio pottery including bowls, vases and serving dishes including examples by Jill Baines (14)  
**Est £60 - £100**

**315** Gunnar Nylund (1904-1997) for Rorstrand, a 1940's Swedish pottery ashtray of rectangular form, signed to base, 25 x 22 cm  
**Est £25 - £35**

**316** Gunnar Nylund (1904-1997) for Rorstrand, a 1940's Swedish pottery ashtray of circular scallop form, signed to base, d. 20 cm  
**Est £25 - £35**

317



317

A near pair of Ruskin Pottery candlesticks with aqua lustre glazes, impressed marks, one dated 1925, h. 18 cm

**Est £150 - £200**

318



318

An early 20th century Bernard Moore flambe vase decorated with a cockerel and sunset, initialled to base, h. 19 cm

**Est £200 - £300**

319

An early 20th century Bernard Moore flambe vase of squat form, signed to the base, h. 10 cm

**Est £50 - £80**

319



320

Göran Wärff (1933–2022) for Kosta, a large glass open bowl, shades of yellow, green and blue, signed and numbered 57272, label to the side, d. 25 cm

**Est £30 - £50**

321

Per Lütken (1916–1998) for Holmegaard, a 'Gronland Range' (Greenland) 'Torpedo' vase, signed and dated 1962, h. 24 cm

**Est £30 - £50**

322

Vicke Lindstrand (1904–1983) for Orrefors, a clear glass vase modelled as waves with an etched sailing ship, circa 1950, unsigned, h. 28 cm

**Est £50 - £80**

323

A Pilkington Royal Lancastrian vase of squat form with a green mottled glaze, impressed marks and numbered 2505, c. 1909, h. 10 cm

**Est £30 - £50**

323







- 324** Annikki Hovisaari (1913-2004) for Arabia, a 1960's studio pot in mottled green, impressed marks, h. 14 cm

**Est £40 - £60**



- 325** Gilbert Metenier, a 1920/30's pottery vase of slender form with turquoise and grey drip glazes, impressed marks, h. 26 cm, together with a smaller vase by the same factory (2)

**Est £40 - £60**



- 326** Monica Backström (1939-2020) for Kosta Boda, a 'Frozen Image' glass sculpture modelled as a setting sun, in a fixed frame, 29 x 28 cm

**Est £120 - £150**

- 327** A group of three Swedish glass bowls in ruby, green and radium green, d. 20 cm  
\*Elsewhere attributed to either Gunnel Nyman or Gunnar Ander for Lindshammar

**Est £50 - £80**

- 328** Ib Kofod-Larsen for Faarup Mobelfabrik, a Danish teak and crossbanded extending dining table with two fitted leaves, 11'9-219 x 120 cm together with a set of six Danish teak dining chairs in the manner of Kurt Ostervig (7)

**Est £500 - £800**

329



329

A 1960's McIntosh teak extending coffee table with black laminate slides at either end, 107 x 48 cm

**Est £150 - £200**

330

Attributed to Maria Westerberg for Green Furniture of Sweden, a pair of contemporary 'T-Shirt chairs', the steel wire frames woven with fabric

**Est £80 - £120**

331

A late 20th century pink glass table centre in the form of a hat, d. 53 cm

**Est £20 - £30**

334



332



332

David Sharp for Rye, a 1960's studio pottery sculpture modelled as a bull, stamps to underside, l. 24 cm

**Est £50 - £80**

333

A 1960's studio pottery vase of tall tapering form, the grey ground decorated with blue and green shapes, indistinct impressed marks to the base, h. 54 cm

**Est £40 - £60**

334

Geoffrey Baxter for Whitefriars, a textured glass 'Cello' vase in cinnamon, h. 18 cm

**Est £100 - £150**

335

Frank Thrower for Dartington, a FT72 Greek Key vase with a flared rim, together with a Whitefriars-style vase (2)

**Est £20 - £30**



**336** A 1970's brown vinyl wingback swivel armchair on an aluminium five-star tilting base \*SFP

**Est £60 - £80**

**337** Lord Norman Foster for Tecno, a 1980's 'Nomos' table, the circular glass surface resting on a four-star aluminium base, d. 120 cm

**Est £500 - £800**

**338** EOOS for Walter Knoll, a set of ten 'Jason' chairs in brown (10) \*SFP

**Est £200 - £300**

**339** EOOS for Walter Knoll, a set of five 'Jason' chairs in brown (5) \*SFP

**Est £100 - £150**

340



340

PearsonLloyd for Walter Knoll, a pair of blue 'Oscar' armchairs with adjustable headrests and four-star swivel bases  
\*SFP

**Est £150 - £200**

341

Charles and Ray Eames for Vitra, a harlequin set of eight 2010 plastic armchairs, the shells on Eiffel bases or tubular legs (8)

**Est £250 - £350**

342

A pair of glass and chromed E1027 adjustable side tables designed by Eileen Gray

**Est £150 - £200**

343

A pair of contemporary spun aluminium table lamps with opaque glass shades of conical form, in the manner of Foscarini (2)

**Est £80 - £120**

342



343



- 344** An Italian black 'Suitcase Line' seating cube or stool by Minotti \*SFP  
**Est £50 - £70**

- 345** A pair of 1930's adjustable machinist stools by Singer (2)  
**Est £200 - £300**



- 346** Two late 20th century hat and coat stands (2)  
**Est £40 - £60**

- 347** A white two-tier trolley together with a group of lighting including an Endon adjustable table lamp (5)  
**Est £50 - £70**

- 348** Ken Pyne (b. 1951), 'Arkwright and Farson Solicitors', signed and inscribed, pen and ink drawing, image 18 x 19 cm  
**Est £20 - £30**

- 349** In the manner of Kay Bojesens, a teak hanging monkey bearing a paper label for 'Mount Royal Merchandise MRM', together with a freestanding teak bird (2)  
**Est £40 - £60**



350

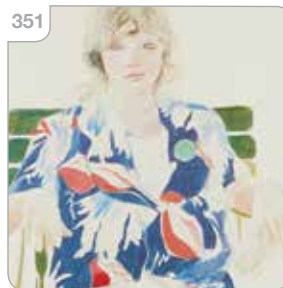


350

A Shelley Art Deco  
'Sunrise & Tall Tree'  
Queen Anne-shape six-  
sitting part tea service  
including six cups and  
saucers, six side plates,  
a cake plate and milk jug,  
No. 11678

**Est £250 - £350**

351



351

After David Hockney (b. 1937),  
'Celia. Carennac',  
lithographic print,  
printed signature in the image,  
commissioned by Habitat in 1984,  
80 x 60 cm

**Est £50 - £80**

352

In the manner of Bernard  
Rooke, a stoneware  
vase of cuboid form,  
decorated with incised  
geometric decoration on  
a brown glazed body,  
h. 22 cm

**Est £40 - £60**

353

A 1960's school science laboratory cabinet, the laminate  
surface over a beech body with an arrangement of nine  
drawers and one door, each with aluminium handles, on a  
plinth base, l. 188 cm

**Est £200 - £300**

354

Cecil Edwin Frans  
Skotnes (South African  
1926-2009),  
'Ithongo Lokwazi,  
The Muse of Learning',  
a poem and woodcut,  
signed and dated '79  
overall 26 x 37 cm

**Est £80 - £120**

355



355

Donald Pass  
(1930-2010),  
'Cheshire Landscape,  
Spring',  
attribution to mount,  
oil on canvas,  
image 101 x 126 cm  
\*Part gallery label verso,  
New Art Centre, 41  
Sloane Street, London

**Est £300 - £500**

356

Jean Michel Lengrand  
(b.1955, French)  
'The Sphinx'  
oil on board,  
signed and dated 1983  
151 cm x 92 cm

**Est £200 - £300**

357

A pair of cream moulded  
plastic and metal framed  
bow back armchairs in  
the manner of Wegner,  
each with a grey faux  
fur seat (2)

**Est £50 - £80**

358

A pair of Finish Iittala  
Festivo 2665-150 clear  
glass candlesticks, h. 14  
cm, boxed (2)

**Est £50 - £80**



## Hammer Prices - Bedford, May 2022 Sale

1	£180	57	£30	112	£140	161	£65	212	£50	262	£85
2	£95	58	£30	113	£120	162	£380	214	£40	263	£30
3	£95	60	£40	114	£35	163	£100	215	£30	264	£70
4	£360	63	£22	115	£50	165	£160	218	£26	265	£100
5	£150	64	£70	116	£60	168	£170	220	£5,000	266	£650
6	£220	65	£26	117	£26	169	£14	221	£90	267	£170
7	£150	67	£220	118	£50	170	£420	222	£75	268	£55
8	£65	68	£130	119	£55	171	£40	223	£45	269	£340
9	£160	69	£420	120	£30	172	£50	224	£500	270	£20
11	£220	70	£200	121	£20	174	£110	226	£170	271	£45
12	£90	71	£340	124	£45	175	£160	227	£480	272	£26
13	£85	72	£28	125	£22	176	£160	229	£28	273	£26
14	£90	73	£100	130	£120	177	£1,800	230	£90	274	£10
15	£60	74	£70	131	£20	178	£1,300	231	£60	275	£150
16	£30	75	£900	132	£300	179	£200	232	£65	276	£220
17	£30	76	£220	133	£45	180	£380	233	£170	277	£280
18	£12	77	£45	134	£30	181	£50	234	£35	278	£40
22	£180	78	£160	135	£20	182	£50	235	£80	280	£140
25	£300	79	£200	136	£200	183	£70	236	£140	281	£85
27	£460	80	£300	137	£75	184	£100	237	£190	282	£60
28	£240	81	£130	138	£50	185	£140	238	£40	284	£45
29	£420	82	£65	139	£26	186	£75	239	£95	285	£100
30	£170	83	£40	140	£30	188	£75	240	£40	286	£260
31	£480	84	£55	141	£600	189	£60	242	£80	288	£85
32	£600	85	£35	142	£280	190	£26	243	£160	289	£550
37	£550	87	£50	143	£100	193	£220	244	£10	290	£460
38	£380	88	£35	144	£800	194	£300	245	£95	291	£460
39	£110	89	£10	145	£160	195	£190	246	£60	292	£480
40	£60	90	£95	146	£300	197	£10	247	£50	293	£190
41	£45	94	£20	147	£85	198	£10	248	£22	294	£130
42	£400	97	£40	148	£35	199	£50	249	£30	295	£45
43	£120	98	£20	149	£280	200	£110	250	£30	296	£50
44	£14	99	£460	150	£400	201	£55	251	£20	297	£280
45	£55	100	£50	151	£55	202	£35	252	£2,200	298	£500
46	£75	101	£20	152	£50	203	£60	253	£750	299	£40
47	£220	102	£20	153	£90	204	£150	254	£300		
48	£80	103	£20	154	£70	205	£24	255	£75		
49	£300	104	£20	155	£200	206	£30	256	£85		
51	£110	105	£20	156	£85	207	£14	257	£200		
52	£110	106	£30	157	£95	208	£50	258	£95		
53	£30	109	£5	158	£120	209	£80	259	£45		
54	£35	110	£30	159	£65	210	£65	260	£26		
55	£20	111	£35	160	£65	211	£60	261	£16		

## Next Sale

Bedford Auction Centre  
Friday 18th November | Commencing at 10.30am

Visit our website for full details  
[www.peacockauction.co.uk](http://www.peacockauction.co.uk)